



G2FF (HK) - Install Winner Trade

Synopsis:

Version: 1.0

Status: Issued

Author: PMO

Date: 2019/01/31

File Name: G2FF HK-Install G2FF Exe-TC.docx

Approved:

Martin Wong (Development Manager)

CONFIDENTIAL INFORMATION OF N2N-AFE (Hong Kong) Limited

This document contains information proprietary to N2N-AFE (Hong Kong) Limited and may not be reproduced, disclosed or used in whole or in part without the express written permission of N2N-AFE (Hong Kong) Limited.

© Copyright N2N-AFE (Hong Kong) Limited

CONTENTS

CONTENTS..... 2

1 GLOSSARY..... 2

2 REFERENCES..... 2

3 DOCUMENT HISTORY..... 2

4 INSTALLATION..... 3

 4.1 WINNERTRADE..... 3

5 LOGIN 7

 5.1 WINNER TRADE..... 7

1 GLOSSARY

Abbreviation	Description

2 REFERENCES

3 DOCUMENT HISTORY

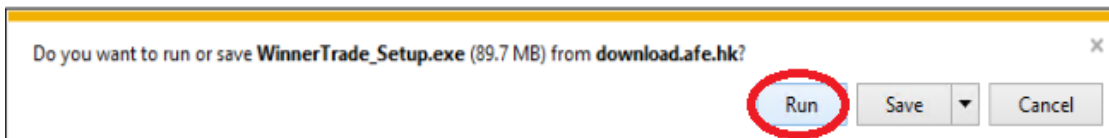
Date	Version	Author	Description
31 Aug 2020	1.0	PMO	First draft

4 INSTALLATION

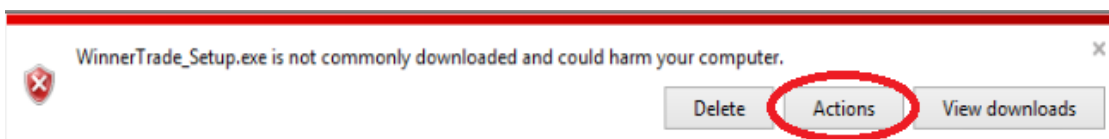
4.1 WINNERTRADE

Click the link http://download.afe.hk/G2FF/WinnerTrade/Setup/TC/WinnerTrade_Setup.exe

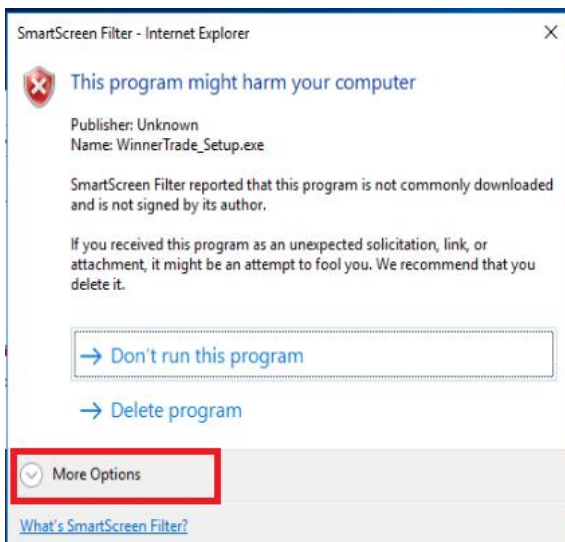
Click Run.



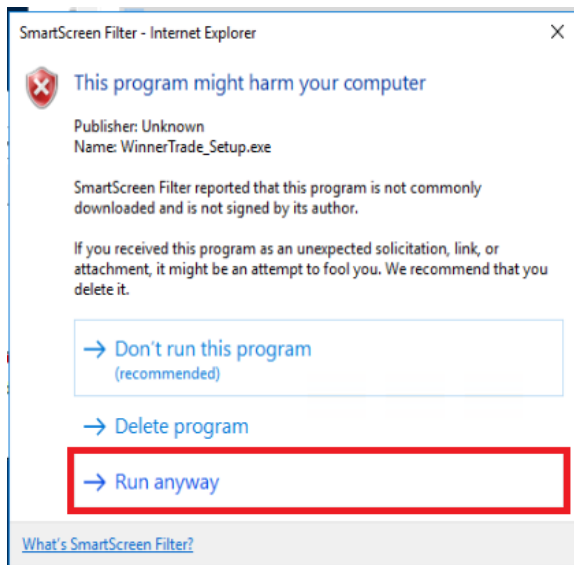
Click Actions.

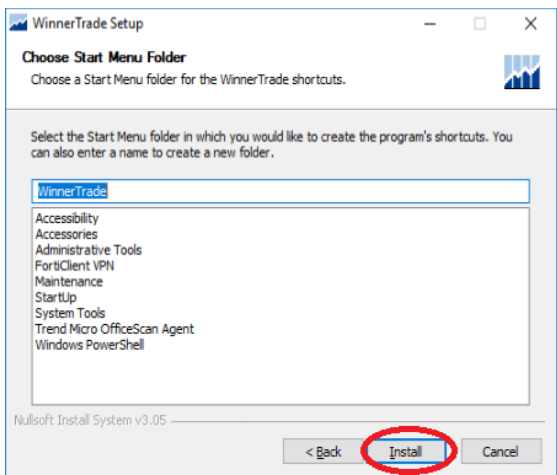
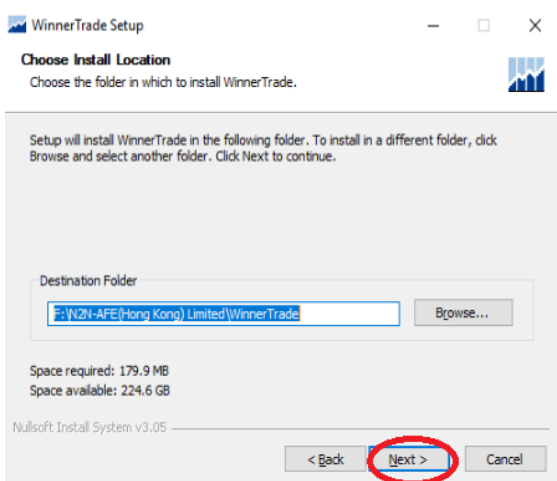
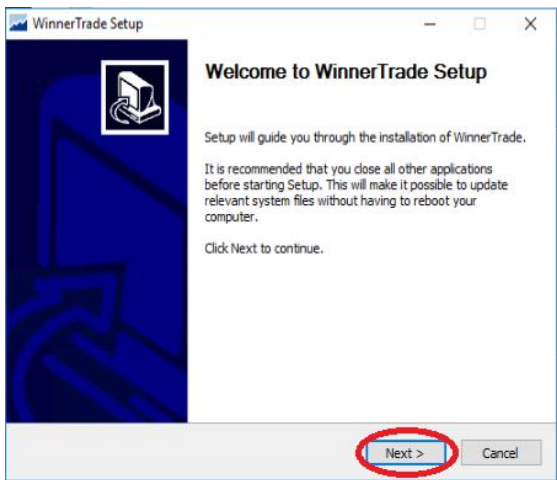


Click "More Options".

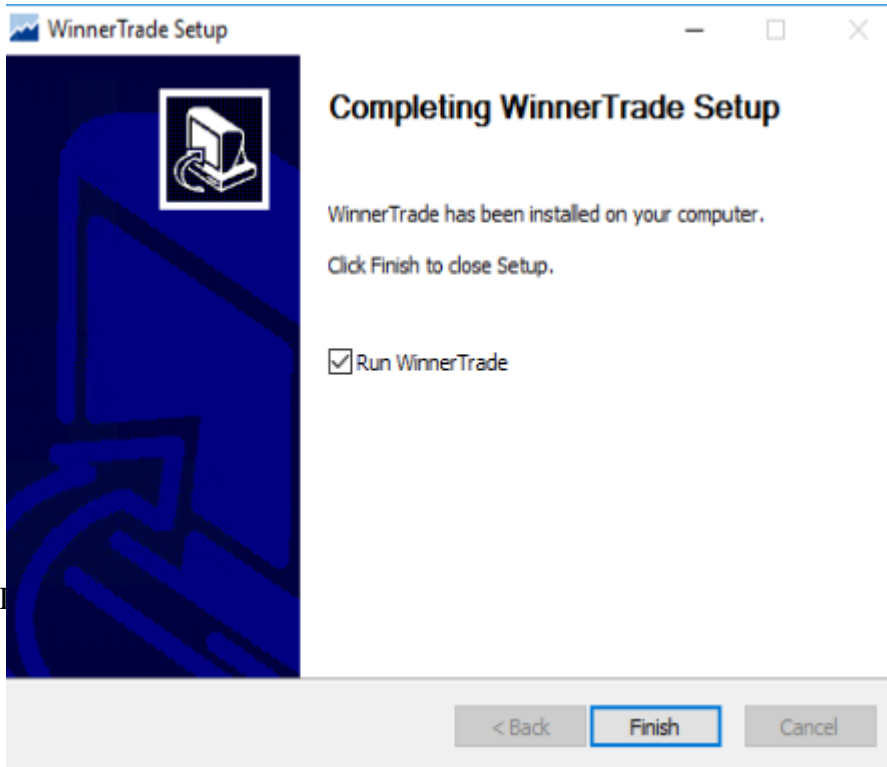


Click "Run anyway".





This process may take server minutes...



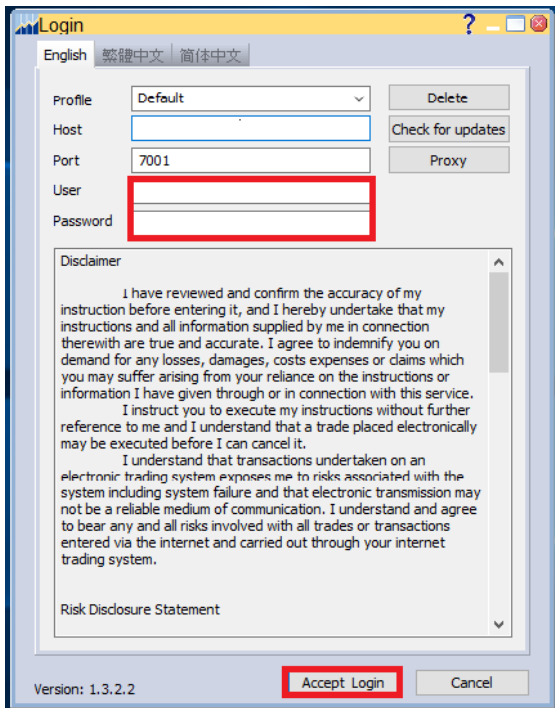
5 LOGIN

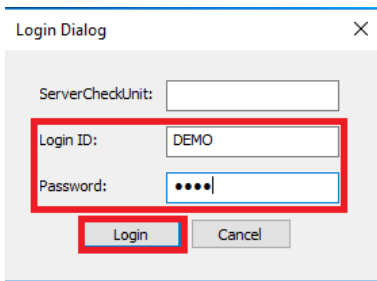
5.1 WINNER TRADE



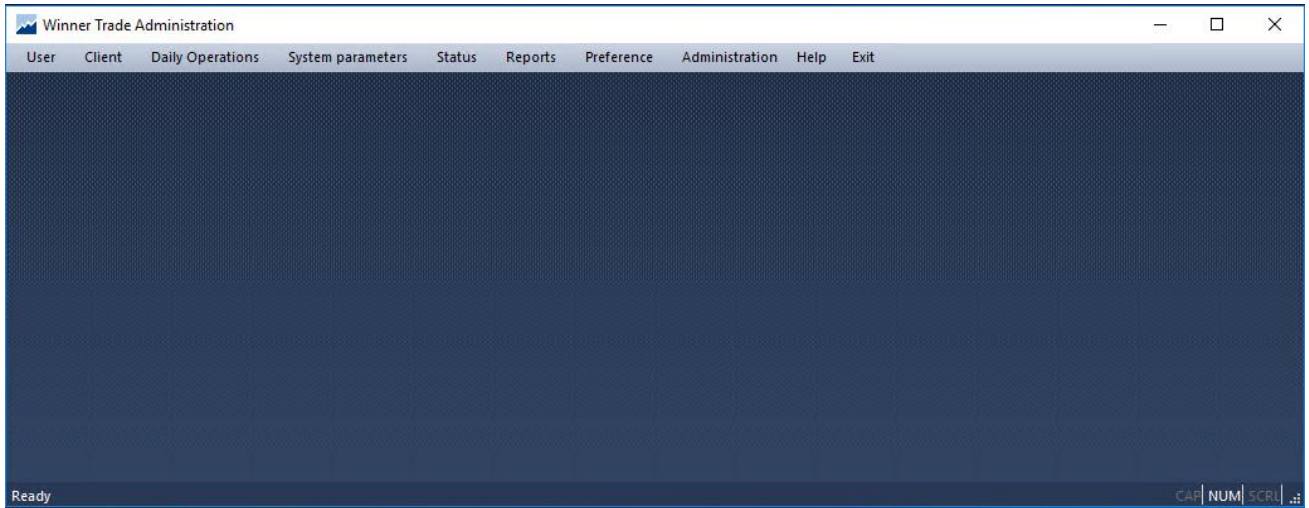
Double click  to login.

Input “User”, “Password”, then click “Accept Login”.





A screenshot of a 'Login Dialog' window. It contains three input fields: 'ServerCheckUnit' (empty), 'Login ID' (containing 'DEMO'), and 'Password' (containing four dots). Below the fields are two buttons: 'Login' and 'Cancel'. A red rectangular box highlights the 'Login ID' and 'Password' fields and the 'Login' button.



END OF DOCUMENT